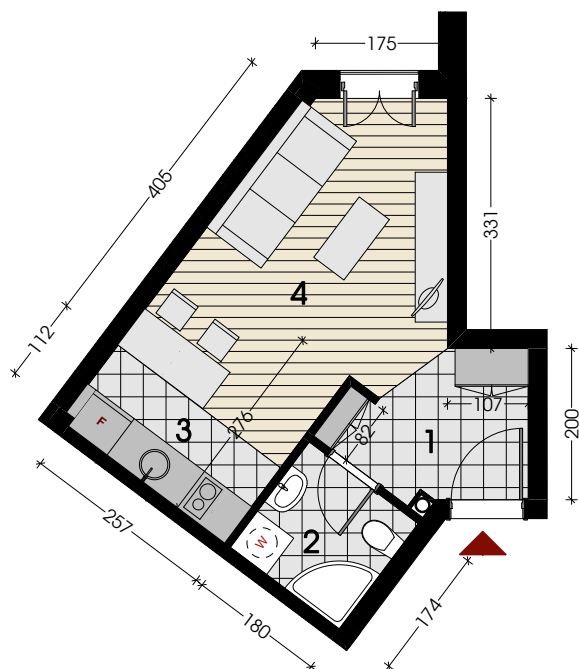


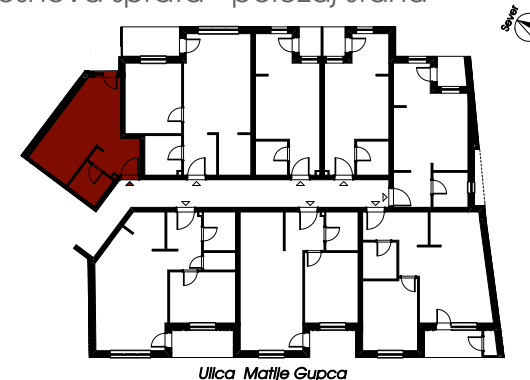
Garsonjera 24.14m²



stan br.	1	9
sprat	I	II

br.	prostorija	pod	površina
1	ulaz	keramičke pločice	4.24m ²
2	kupatilo	keramičke pločice	3.14m ²
3	kuhinja	keramičke pločice	3.35m ²
4	dnevna soba	parket	13.41m ²
UKUPNO			24.14m²

osnova sprata - položaj stana



3D prikaz objekta



3D prikaz stana

