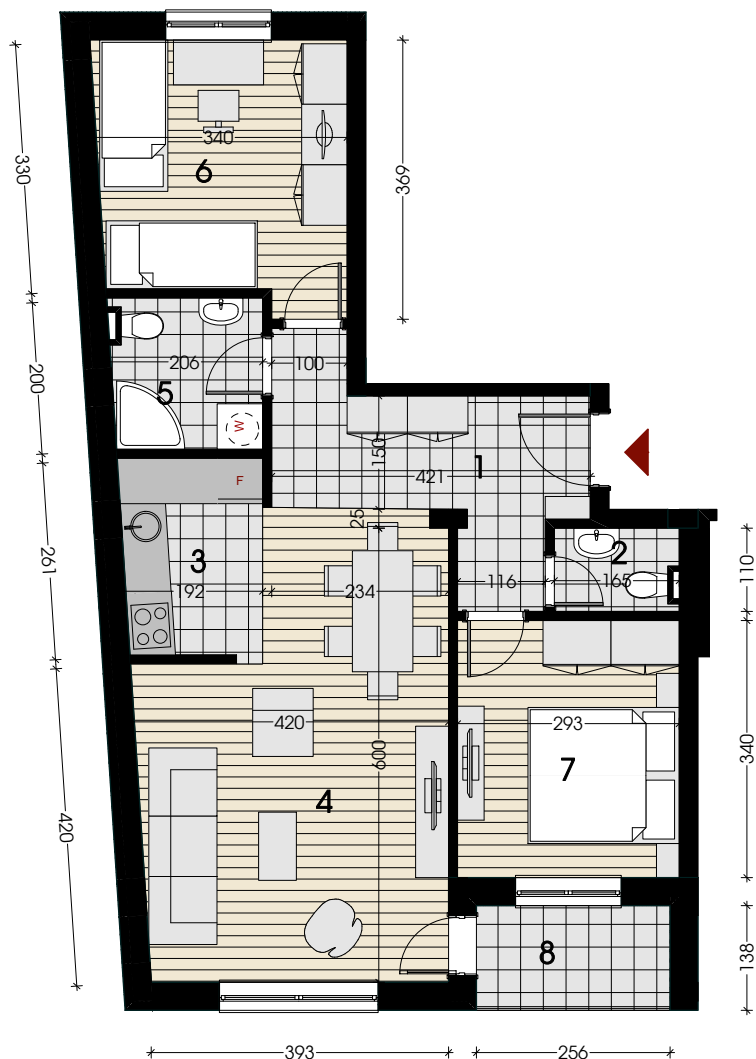


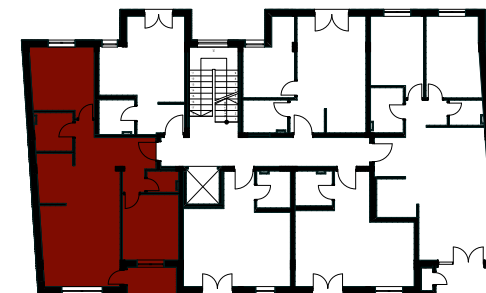
## Dvoiposoban stan 66.13m<sup>2</sup>

stan br.	1	7	13	19
sprat	I	II	III	IV



br.	prostorija	pod	površina
1	ulaz sa hodnikom	keramičke pločice	8.82m <sup>2</sup>
2	toalet	keramičke pločice	1.74m <sup>2</sup>
3	kuhinja	keramičke pločice	5.07m <sup>2</sup>
4	dnevna soba i trpezarija	parket	21.84m <sup>2</sup>
5	kupatilo	keramičke pločice	3.91m <sup>2</sup>
6	soba	parket	9.96m <sup>2</sup>
7	soba	parket	11.24m <sup>2</sup>
8	terasa	keramičke pločice	3.55m <sup>2</sup>
<b>UKUPNO</b>			<b>66.13m<sup>2</sup></b>

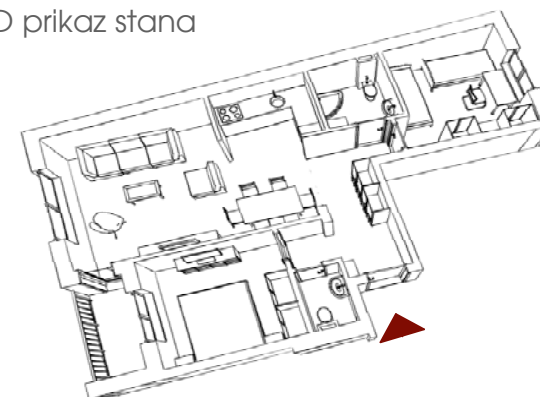
osnova sprata - položaj stana



Ulica Jo Lajoša



3D prikaz stana



razmera: 1:100/A4