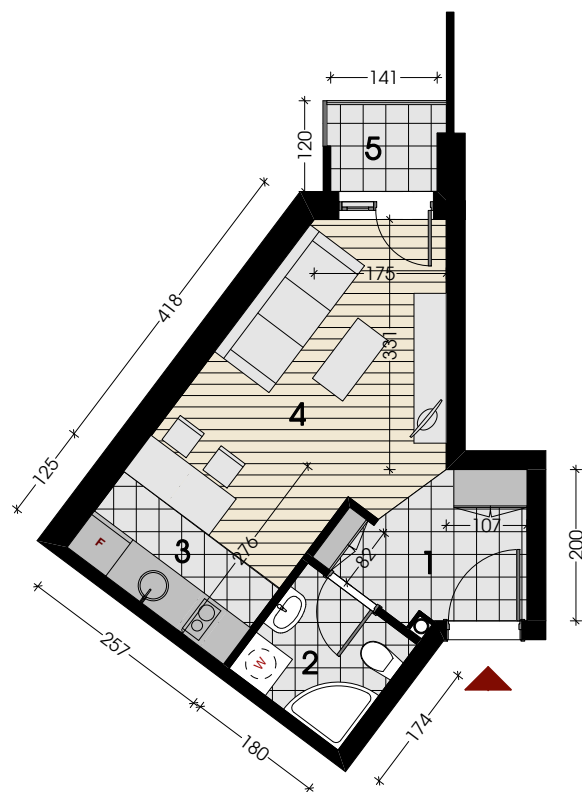


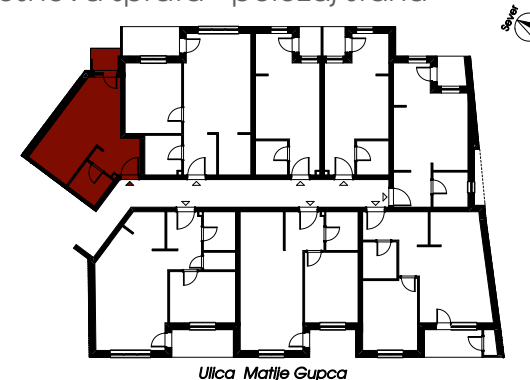
Garsonjera 25.31m²



stan br.	1	9
sprat	I	II

br.	prostorija	pod	površina
1	ulaz	keramičke pločice	4.24m ²
2	kupatilo	keramičke pločice	3.14m ²
3	kuhinja	keramičke pločice	3.22m ²
4	dnevna soba	parket	12.91m ²
5	balkon	keramičke pločice	1.80m ²
UKUPNO			25.31m²

osnova sprata - položaj stana



3D prikaz objekta



3D prikaz stana

