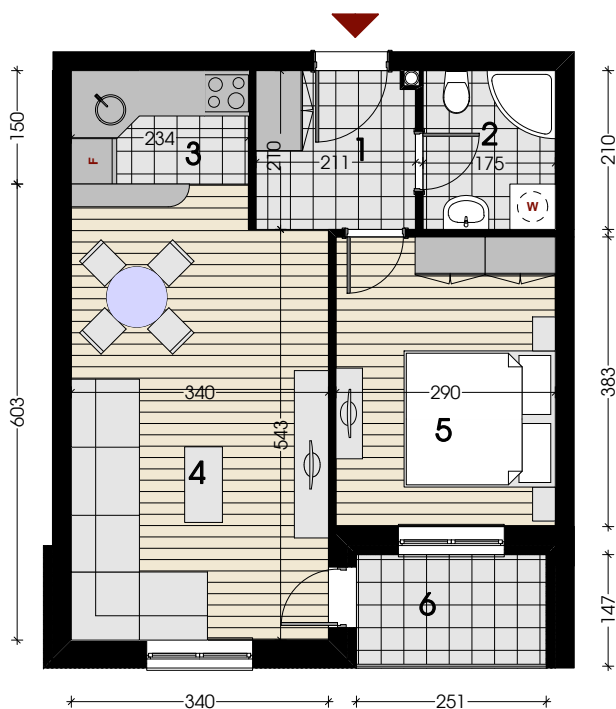


Dvosoban stan 46.32m²

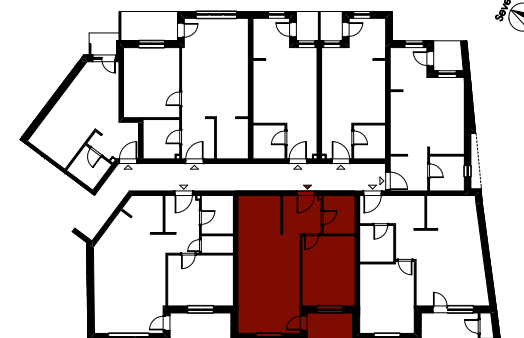


stan br.	7	15	21	28	34
sprat	I	II	III	IV	V

br.	prostorija	pod	površina
1	ulaz	keramičke pločice	4.38m ²
2	kupatilo	keramičke pločice	3.68m ²
3	kuhinja	keramičke pločice	3.51m ²
4	dnevna soba i trpezarija	parket	19.87m ²
5	soba	parket	11.11m ²
6	lođa	keramičke pločice	3.77m ²

UKUPNO 46.32m²

osnova sprata - položaj stana



Ulica Matije Gupca

3D prikaz objekta



3D prikaz stana

