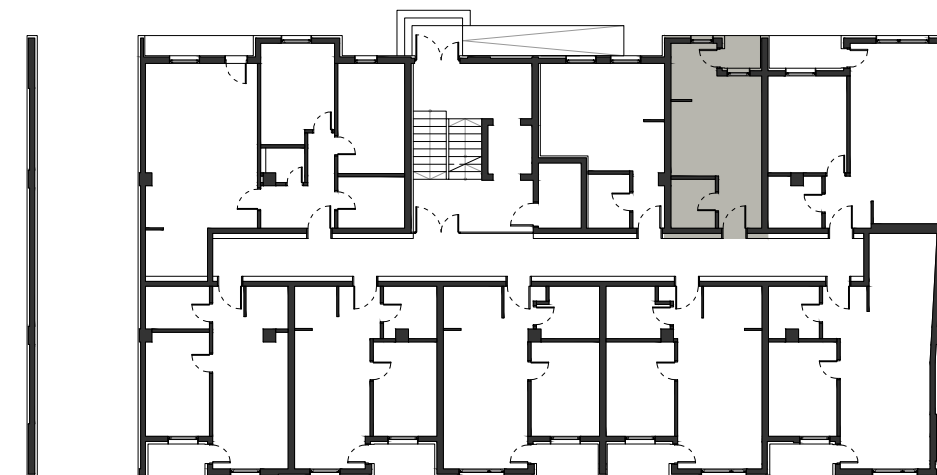


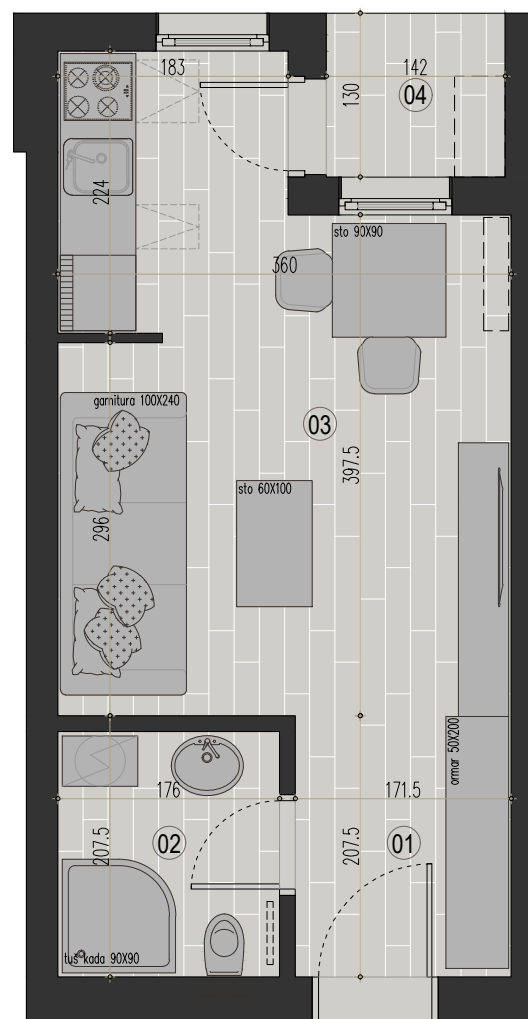
GARSONJERA 25.46 m²

stan br.	02	-	-	-	-	-	-
sprat	P	I	II	III	IV	V	VI

R.B.	PROSTORIJA	POD	P m ²
01	ULAZNI PROSTOR	KERAMIČKE PLOČICE	3.56
02	KUPATILO	KERAMIČKE PLOČICE	3.43
03	DN. SOBA, TRPEZ. I KUH.	KERAMIČKE PLOČICE	16.63
04	TERASA	KERAMIČKE PLOČICE	1.84
UKUPNO			25.46 m ²



osnova prizemlja - položaj stana



3D prikaz zgrade

3D prikaz stana